



OMEGA

VALVOLA COLONNA MONTANTE CON CAPPuccio DI PIOMBATURA
RISER COLUMN BALL VALVE WITH SEALING CAP

MENSOLA PER CONTATORE
BALL VALVE FOR GAS METER

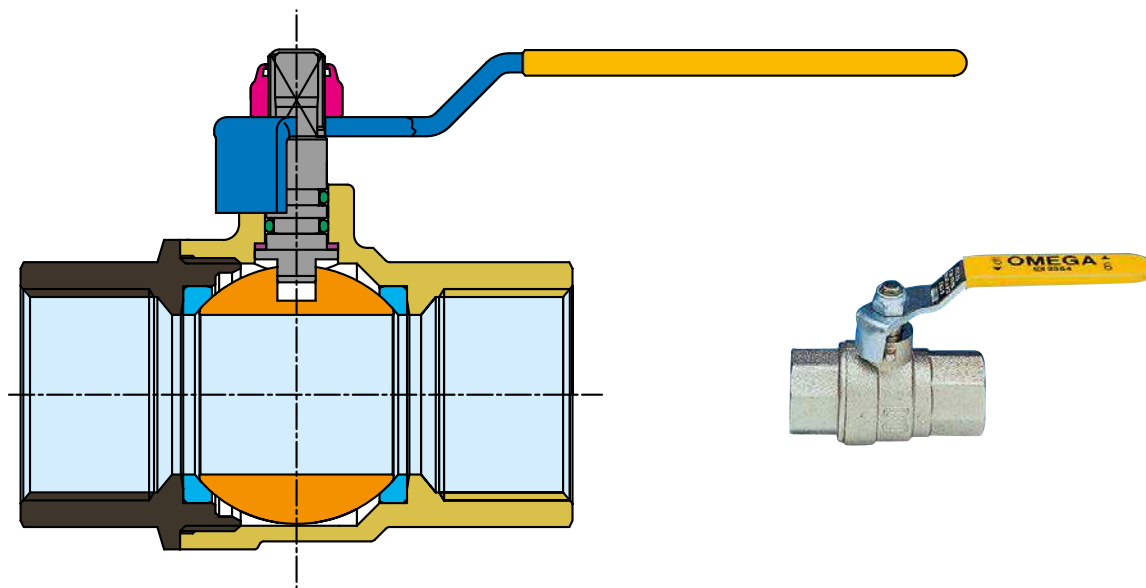
VALVOLA CON SERRATURA
LOCKABLE BALL VALVE

VALVOLA DIRITTA E A SQUADRA SERIE PESANTE
STRAIGHT AND ANGLED BALL VALVE HEAVY SERIES

VALVOLA PER ALTE TEMPERATURE
BALL VALVE FOR HIGH TEMPERATURE



APPROVATA EN 331 / APPROVED TO EN 331



Per l'applicabilità del prodotto in paesi diversi dall'Italia, riferirsi alle specifiche norme nazionali/internazionali dei singoli stati.
Refer to specific national/international standards, where existing, for countries others than Italy.

SPECIFICA MATERIALI / MATERIAL SPECIFICATION

	PARTICOLARI / COMPONENT	MATERIALI / MATERIAL	DESCRIZIONE / DESCRIPTION
1	CORPO BODY	CW 617 N UNI EN 12165 CW 617 N UNI EN 12165	STAMPATO DA BARRA, NICHELATO FORGED, NICKEL-PLATED
2	MANICOTTO END ADAPTER	CW 617 N UNI EN 12165 CW 617 N UNI EN 12165	STAMPATO DA BARRA, NICHELATO FORGED, NICKEL-PLATED
3	SFERA BALL	CW 614 N UNI EN 12164 CW 614 N UNI EN 12164	DA BARRA, NICHEL-CROMATA MACHINED, CHROME-PLATED
4	SEDI LATERALI BALL GASKETS	P.T.F.E. P.T.F.E.	VERGINE PURE
5	PERNO STEM	CW 614 N UNI EN 12164 CW 614 N UNI EN 12164	DA BARRA MACHINED
6	ANELLO ANTIFRIZIONE THRUST WASHER	P.T.F.E. P.T.F.E.	VERGINE PURE
7	O-RINGS O-RINGS	ELASTOMERO ELASTOMER	ADATTO ALL'USO PER GAS A NORMA EN549 SUITABLE FOR USE WITH GAS EN549
8	LEVA LEVER HANDLE FARFALLA O LEVA LEVER OR T-HANDLE	ACCIAIO ZINCATO ZINC-PLATED STEEL AL UNI5076 AL UNI5076	PLASTIFICATA IN P.V.C. PVC INSULATED VERNICIATA PAINTED
9	DADO AUTO-BLOCCANTE SELF-LOCKING NUT	ACCIAIO 8G 8G STEEL	ZINCATO ZINC-PLATED

APPROVAZIONI INTERNAZIONALI

Le valvole a sfera **OMEGA** sono approvate a norma EN 331. Le valvole a sfera **OMEGA** hanno ottenuto approvazioni ufficiali per l'utilizzo con gas in vari paesi.

INTERNATIONAL APPROVALS

The **OMEGA** valves are approved to the EN 331 standard.

The **OMEGA** valves gained official approvals in various countries for use with gas.

FILETTATURE

Estremità filettate UNI EN 10226 (BSPT a richiesta).

END CONNECTIONS

Screwed to UNI EN 10226 (BSPT on request).

IMPIEGHI

Gas combustibili:

- gas di città (1^a famiglia)
- gas metano (2^a famiglia)
- gas liquidi (3^a famiglia).

Le valvole a sfera **OMEGA** sono anche adatte per l'uso con acqua calda e fredda, aria compressa, olii e idrocarburi in generale.

USES

Fuel gas:

- town gas (1st family)
- natural gas (2nd family)
- L.P.G. gas (3rd family).

The **OMEGA** ball valves are also suitable for hot and cold water, compressed air, oils and hydrocarbons in general.

PRESSIONE DI ESERCIZIO

Per gas combustibili 1^a, 2^a e 3^a famiglia 5 MOP.

Per altri usi da PN 80 (1/4") a PN 16 (4").

Vedere diagramma pressione/temperatura.

WORKING PRESSURE

For fuel gas 1^a, 2^a e 3^a family 5 MOP.

For other uses from PN 80 (1/4") to PN 16 (size 4").

See pressure/temperature diagram.

LIMITI DI TEMPERATURA

Per gas combustibili da -20°C a +60°C.

Per altri usi da -20°C a +130°C.

Vedere diagramma pressione/temperatura.

TEMPERATURE LIMITS

For fuel gas from -20°C to +60°C.

For other uses from -20°C to +130°C.

See pressure/temperature diagram.

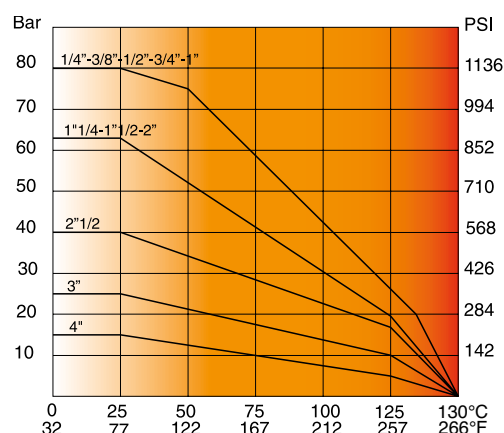


Diagramma pressione/temperatura

(prova eseguita con acqua)

Pressure/temperature diagram

(tested with water)

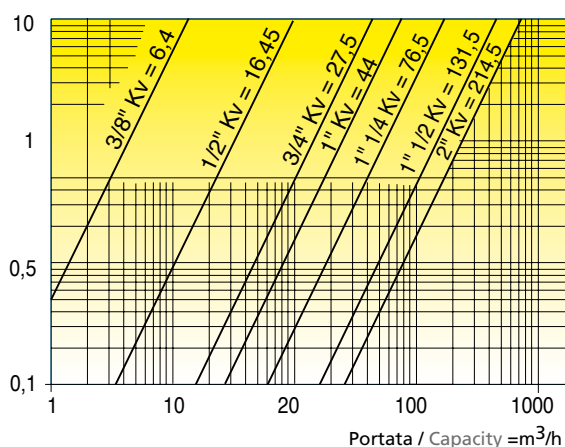


Diagramma perdite di carico

(prova eseguita con aria)

Head loss diagram

(tested with air)

Valvola a sfera con serratura a doppia funzione • Ball valve with double-function locking device



Art. S.0268

VANTAGGI

Sistema di chiusura sicuro. Sistema di morosità pratico e veloce, che evita il laborioso fissaggio, mediante la tradizionale piombatura con il filo. Due chiavi per l'utente (di colore grigio) fornite insieme alla valvola. Una chiave maestra per il responsabile dell'impianto che funge sia da passepartout che da morosità (di colore giallo) fornita solo a richiesta. N° 100 combinazioni sotto la stessa chiave maestra.

ADVANTAGES

Safe locking device. Practical and rapid arrearage system which replaces the laborious fixing through the traditional wire-leading. Two grey keys are given to the user together with the valve. The person in charge of the system can receive a master key, which suits all the locks and can be used in case of arrearage. It is a yellow key and it is available only upon request. The same yellow key can be used for 100 different combinations.

POSIZIONE NORMALE

- 1 • Con la chiave in questa posizione la valvola funziona normalmente ON-OFF e la chiave NON PUÓ essere estratta.

NORMAL POSITION

- 1 • When the key is in this position, the valve works normally ON-OFF and the key itself CANNOT be taken away.

POSIZIONE DI BLOCCAGGIO UTENTE

- 2 • Con la chiave in questa posizione la valvola può essere bloccata in posizione OFF e la chiave PUÓ essere estratta.

USER LOCKING POSITION

- 2 • When the key is in this position, the valve can be locked in the OFF position and the key CAN be taken away.

POSIZIONE DI MOROSITÀ

POSIZIONE ATTIVABILE CON LA SOLA CHIAVE PASSEPARTOUT

- 3 • Con la chiave in questa posizione la valvola può essere bloccata in posizione OFF e NON PUÓ essere bloccata con la chiave utente. (Chiave gialla in dotazione all'ente erogatore)

ARREARAGE POSITION

ONLY THE MASTER KEY CAN ACTIVATE THE POSITION

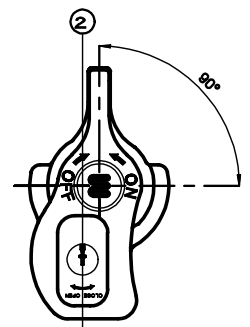
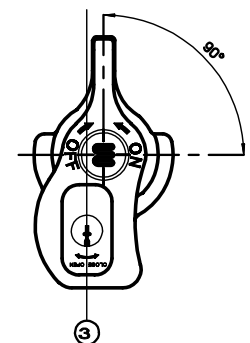
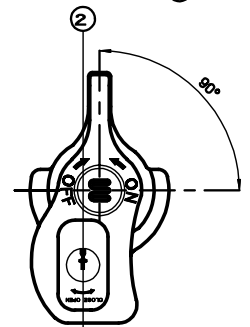
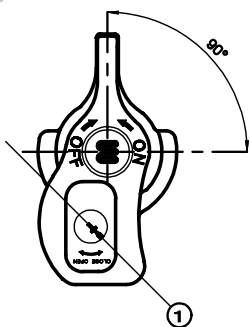
- 3 • When the key is in this position, the valve can be locked in the OFF position and it CANNOT be locked with the user's key.

RITORNO POSIZIONE NORMALE

- 4 • Con la chiave riportata in posizione 2 dall'ente erogatore la valvola ritorna a funzionare normalmente.

RETURN TO THE NORMAL POSITION

- 4 • When the key is put back in the second position by the supplier, the valve can work normally.



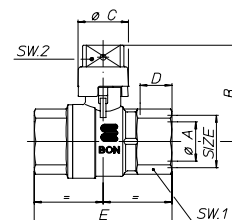
Art. S.0251 OMEGA



SIZE	1/2"	3/4"	1"	1 1/4"	1 1/2"	2"	2 1/2"	3"		
øA pass./bore	15	20	25	32	40	50	65	80		
B mm	39,5	49	53,5	69,5	75,5	92,5	103,5	113,2		
øC mm	23	25,5	25,5	34,5	34,5	40,5	40,5	47		
D mm	15	16,3	19,1	21,4	21,4	25,7	30,2	33,3		
E mm	59,5	70	83	98,5	108	130	158	182,5		
SW1 mm	25	31	38	47	54	66	83	97		
SW2 mm	11	12	12	15	15	18	18	21		

Valvola a sfera femmina/femmina a passaggio totale con cappuccio di piombatura, nichelata.

Full bore ball valve for fuel gas with lockable rectangular head, female/female, nickel-plated.



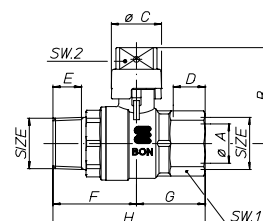
Art. S.0252 OMEGA



SIZE	1/2"	3/4"	1"	1 1/4"	1 1/2"	2"				
øA pass./bore	15	20	25	32	40	50				
B mm	39,5	49	53,5	69,5	75,5	92,5				
øC mm	23	25,5	25,5	34,5	34,5	40,5				
D mm	15	16,3	19,1	21,4	21,4	25,7				
E mm	13,2	14,5	16,8	19,1	19,1	23,4				
F mm	37,25	41	47,4	54	59,6	71,6				
G mm	29,75	35	41,6	49	53,9	64,9				
H mm	67	76	89	103	113,5	136,5				
SW1 mm	25	31	38	47	54	66				
SW2 mm	11	12	12	15	15	18				

Valvola a sfera maschio/femmina a passaggio totale con cappuccio di piombatura, nichelata.

Full bore ball valve with lockable rectangular head, male/female, nickel-plated.



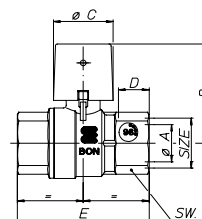
Art. S.0257 OMEGA



SIZE	3/4"	1"	1 1/4"	1 1/2"	2"	2 1/2"				
øA pass./bore	20	25	32	40	50	65				
B mm	52,5	57	73	79	96	107				
øC mm	31,5	31,5	40,5	40,5	47,5	47,5				
D mm	16,3	19,1	21,4	21,4	25,7	30,2				
E mm	70	83	98,5	108	130	158				
SW mm	31	38	47	54	66	83				

Valvola a sfera femmina/femmina a passaggio totale con cappuccio giallo piombabile, per colonne montanti GAS, nichelata.

Full bore ball valve with lockable rectangular head and yellow plastic cap, female/female, nickel-plated.



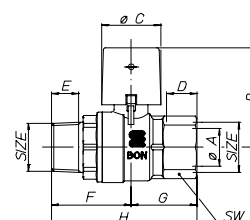
Art. S.0258 OMEGA



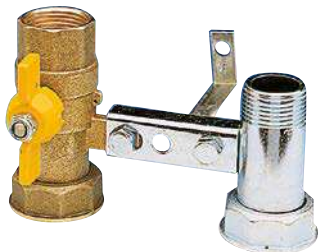
SIZE	3/4"	1"	1 1/4"	1 1/2"	2"					
øA pass./bore	20	25	32	40	50					
B mm	52,5	57	73	79	96					
øC mm	31,5	31,5	40,5	40,5	47,5					
D mm	16,3	19,1	21,4	21,4	25,7					
E mm	14,5	16,8	19,1	19,1	23,4					
F mm	41	47,4	54	59,6	71,6					
G mm	35	41,6	49	53,9	64,9					
H mm	76	89	103	113,5	136,5					
SW mm	31	38	47	54	66					

Valvola a sfera maschio/femmina a passaggio totale con cappuccio giallo piombabile, per colonne montanti GAS, nichelata.

Full bore ball valve with lockable rectangular head and yellow plastic cap, male/female, nickel-plated.



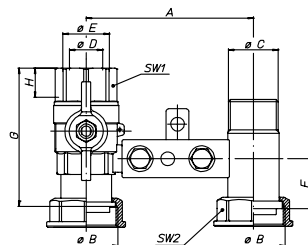
Art. S.0260 OMEGA



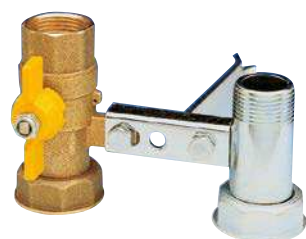
SIZE	3/4"x1"1/4	1"x1"1/4							
A mm	110	110							
øB mm	1"1/4	1"1/4							
øC mm	1"	1"							
øD pass./bore	17,5	22							
øE mm	3/4"	1"							
F mm	32,5	32,5							
G mm	73	92							
H mm	16,2	19,1							
SW1 mm	31	38							
SW2 mm	46	46							

Mensola a sfera per contatore gas interasse 110mm con zanca per fischer, con farfalla, sabbata.

Complete bracket for gas meter Ø 110 mm axle base, for Fischer mounting, with T-handle.



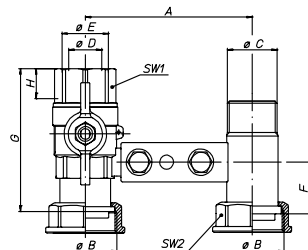
Art. S.0261 OMEGA



SIZE	3/4"x1"1/4	1"x1"1/4							
A mm	110	110							
øB mm	1"1/4	1"1/4							
øC mm	1"	1"							
øD pass./bore	17,5	22							
øE mm	3/4"	1"							
F mm	32,5	32,5							
G mm	73	92							
H mm	16,2	19,1							
SW1 mm	31	38							
SW2 mm	46	46							

Mensola a sfera per contatore gas interasse 110mm con zanca da murare, con farfalla, sabbata.

Complete bracket to be wall for gas meter Ø 110 mm axle base, with T-handle.



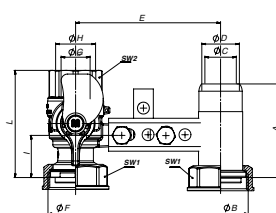
Art. S.0265 OMEGA



SIZE	3/4"x1"1/4	1"x1"1/4							
A mm	71	71							
øB mm	1"1/4	1"1/4							
øC mm	23,5	24							
øD mm	3/4"	1"							
E mm	110	110							
ø F mm	1"1/4	1"1/4							
ø G mm	16	22							
ø H mm	3/4"	1"							
I mm	32	32							
L mm	75,5	82,5							
SW1-2 mm	45-31	45-38							

Mensola a sfera con serratura di morosità per contatore gas, interasse 110mm con zanca per fischer, con farfalla, sabbata.

Complete bracket for gas meter, 110 mm axle base, for fischer mounting, with key-locking device.



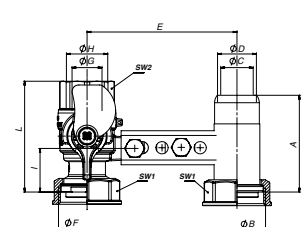
Art. S.0266 OMEGA



SIZE	3/4"x1"1/4	1"x1"1/4							
A mm	71	71							
øB mm	1"1/4	1"1/4							
øC mm	23,5	24							
øD mm	3/4"	1"							
E mm	110	110							
ø F mm	1"1/4	1"1/4							
ø G mm	16	22							
ø H mm	3/4"	1"							
I mm	32	32							
L mm	75,5	82,5							
SW1-2 mm	45-31	45-38							

Mensola a sfera con serratura di morosità per contatore gas, interasse 110mm con zanca da murare, con farfalla, sabbata.

Complete bracket to be wall for gas meter, 110 mm axle base, with key-locking device.



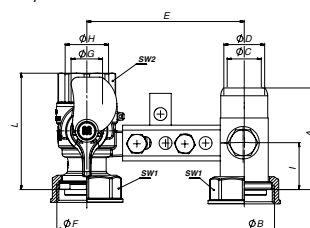
Art. R.1142 OMEGA



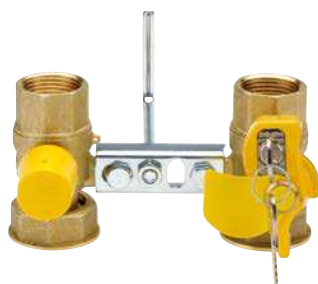
SIZE	1" x 1 1/4"								
A mm	71								
øB	1 1/4"								
øC mm	24								
øD	1"								
E mm	110								
øF	1 1/4"								
øG mm	22								
øH	1"								
I mm	32								
L mm	82,5								
SW1-2 mm	45-38								

Mensola a sfera con serratura di morosità per contatore gas, interasse 110mm con zanca per fisher, con presa da 1/4", con farfalla, sabbiata.

Complete bracket for gas meter, 110 mm axle base, for fischer mounting with key-locking device, with 1/4" port.



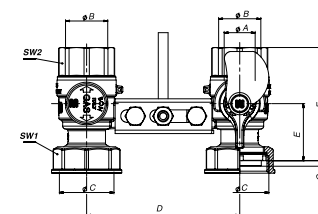
Art. R.0074 OMEGA



SIZE	1" x 1 1/4"								
øA pass./bore	22								
øB	1"								
øC	1 1/4"								
D mm	110								
E mm	41								
F mm	81								
G mm	4								

Mensola con doppia valvola, con serratura di morosità e cappuccio piombabile, interasse 110mm, sabbiata.

Complete bracket for gas meter with double valve, with key-locking device, sealable cap, 110 mm axle base.



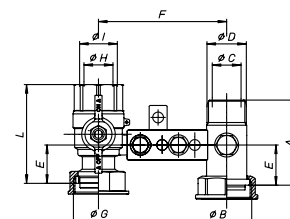
Art. R.1152 OMEGA



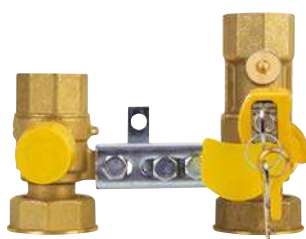
SIZE	1" x 1 1/4"								
A mm	71								
øB	1 1/4"								
øC mm	23,5								
øD	1"								
E mm	32,5								
øF	110								
øG mm	1 1/4"								
øH	22								
I mm	1"								
L mm	82,5								

Mensola a sfera per contatore gas, interasse 110mm con zanca per fisher, con presa da 1/4", con farfalla, sabbiata.

Complete bracket for gas meter, 110 mm axle base, for fischer mounting, with 1/4" port.



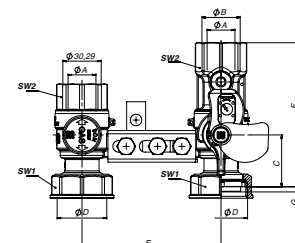
Art. S.1279 OMEGA



SIZE	1" x 1 1/4"								
øA mm	22								
øB	1"								
C mm	41								
øD	1 1/4"								
E mm	110								
F mm	113								
G mm	4								
SW1	45								
SW2	38								

Mensola a doppia valvola con serratura e cappuccio piombabile, presa da 1/4" a valle della sfera, sabbiata.

Complete bracket for gas meter, with locking device and sealable cap, 1/4" port downstream ball.



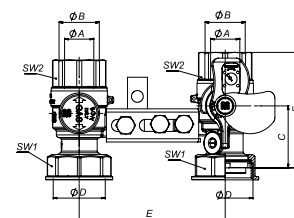
Art. S.1281 OMEGA



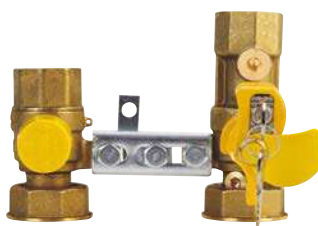
SIZE	1" x 1 1/4"								
øA mm	22								
øB	1"								
C mm	46,5								
øD	1 1/4"								
E mm	110								
F mm	87								
SW1	45								
SW2	38								

Mensola a doppia valvola con serratura e cappuccio piombabile, presa di pressione da 1/4" a monte della sfera, sabbata.

Complete bracket for gas meter, with locking device and sealable plastic cap, 1/4" port upstream ball.



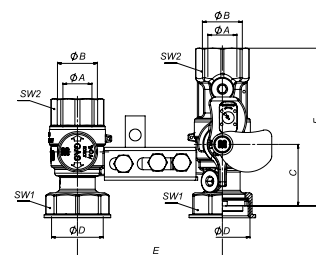
Art. S.1283 OMEGA



SIZE	1" x 1 1/4"								
øA mm	22								
øB	1"								
C mm	46,5								
øD	1 1/4"								
E mm	110								
F mm	120								
SW1	45								
SW2	38								

Mensola a doppia valvola con serratura e cappuccio piombabile, presa di pressione da 1/4" a monte e a valle della sfera, sabbata.

Complete bracket for gas meter, with locking device and sealable cap, 1/4" ports upstream and downstream ball.



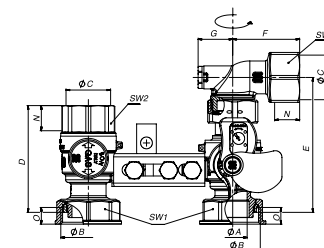
Art. S.1004 OMEGA



SIZE	1 1/4" x 1"								
øA	22								
øB	1 1/4"								
øC	1"								
D mm	81,5								
E mm	102,5								
F mm	51								
G mm	26,4								
H mm	110								
I mm	55								
L mm	58								
M mm	115,5								
N mm	19,1								
O mm	12,7								
SW1 - SW2	45 - 38								

Mensola a doppia valvola con serratura e cappuccio piombabile, presa di pressione e curva orientabile 360°.

Complete bracket for gas meter, with locking device and sealable plastic cap, 1/4" port and adjustable elbow 360°.



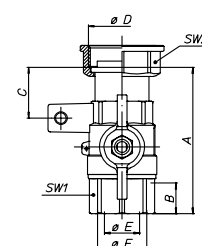
Art. S.0263 OMEGA



SIZE	3/4" x 1 1/4"	1" x 1 1/4"							
A mm	73	91							
B mm	16,2	19,1							
C mm	32,5	31,5							
øD	1 1/4"	1 1/4"							
øE pass./bore	17,5	22							
øF mm	3/4"	3/4"							
SW1 mm	31	38							
SW2 mm	46	46							

Valvola a sfera femmina per contatore gas, con farfalla, sabbata.

Ball valve for gas meter, female, with T-handle.



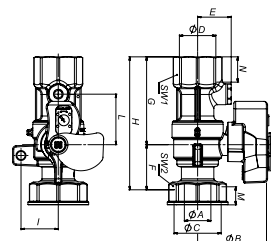
Art. R.1058 OMEGA



SIZE	1" x 1 1/4"								
øA mm	22								
B mm	59								
øC	1 1/4"								
øD	1"								
E mm	28								
F mm	41								
G mm	82								
H mm	123								
I mm	31								
L mm	52								
M mm	12,7								
N mm	19,1								
SW1-2	38-45								

Valvola a sfera per contatore gas, con serratura, con presa da 1/4" a valle della sfera, sabbata.

Ball valve for gas meter, with locking device, with 1/4" port downstream the ball.



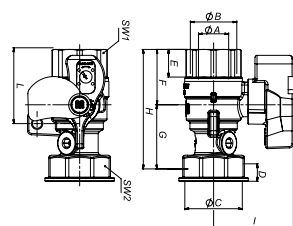
Art. R.1114 OMEGA



SIZE	1" x 1 1/4"								
øA mm	22								
øB	1"								
øC	1 1/4"								
D mm	12,7								
E mm	19,1								
F mm	41,5								
G mm	46,5								
H mm	88								
I mm	58								
L mm	55								
SW1	38								
SW2	45								

Valvola a sfera per contatore gas, con serratura, con presa da 1/4" a monte della sfera, sabbata.

Ball valve for gas meter, with locking device, with 1/4" port upstream the ball.



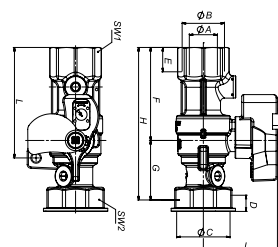
Art. R.1116 OMEGA



SIZE	1" x 1 1/4"								
øA mm	22								
øB	1"								
øC	1 1/4"								
D mm	12,7								
E mm	19,1								
F mm	72								
G mm	45,5								
H mm	118,5								
I mm	58								
L mm	86								
SW1	38								
SW2	45								

Valvola a sfera per contatore gas, con serratura, con presa da 1/4" a monte e a valle della sfera, sabbata.

Ball valve for gas meter, with locking device, with 1/4" port upstream and downstream the ball.



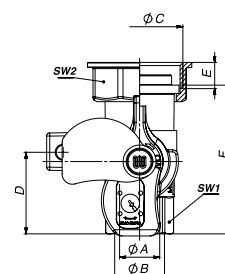
Art. S.0268 OMEGA



SIZE	3/4" x 1 1/4"	1" x 1 1/4"							
ø A mm	17,5	22							
øB	3/4"	1"							
øC	1 1/4"	1 1/4"							
øD mm	32,5	50,5							
E mm	12,7	12,7							
F mm	73	82,5							
SW1 mm	31	38							
SW2 mm	45	45							

Valvola a sfera femmina per contatore gas con serratura di morosità con farfalla, sabbata.

Ball valve for gas meter, female, with key-locking device.



Art. S.1002 OMEGA

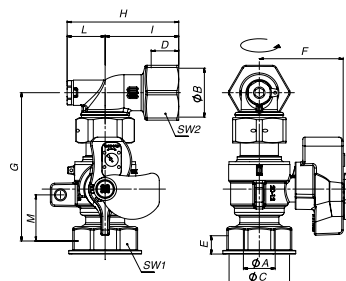
NEW



SIZE	1" x 1 1/4"	1 1/4" x 1"							
øA pass./bore	22	22							
øB	3/4"	1"							
øC	1 1/4"	1 1/4"							
D mm	16,3	19,1							
E mm	12,7	12,7							
F mm	58	58							
G mm	102,5	102,5							
H mm	73,4	77,4							
I mm	47	51							
L mm	26,4	26,4							
M mm	32	32							
SW1-2 mm	45-38	45-38							

Valvola a sfera per contatore gas con serratura e curva orientabile a 360°.

Ball valve for gas meter, with locking device and adjustable elbow 360°.



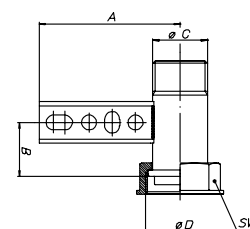
Art. S.0264 OMEGA



SIZE	3/4" x 1 1/4"	1" x 1 1/4"							
A mm	85	85							
B mm	32,5	32,5							
øC	3/4"	1"							
øD	1 1/4"	1 1/4"							
SW mm	46	46							

Cannotto con traversa per mensole a sfera per contatori gas, interasse 110mm, zincato.

Tube with crossbar for gas meter brackets, 110 mm axle base, zinc-plated.



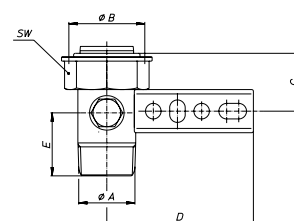
Art. R.1141 OMEGA



SIZE	1" x 1 1/4"								
øA	1"								
øB	1 1/4"								
C mm	32,5								
D mm	85								
E mm	36,5								
SW mm	46								

Cannotto con traversa per mensole a sfera per contatori gas, interasse 110mm, con presa 1/4", zincato.

Tube with crossbar for gas meter brackets, 110 mm axle base, with 1/4" port, zinc-plated.



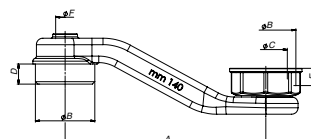
Art. S.1067 OMEGA



SIZE	140:1 1/4"								
A mm	140								
øB	1 1/4"								
C mm	30								
D mm	14								
E mm	13								
øF	1/4"								

Adattatore per mensole maschio/femmina da mm 110 a mm 250, sabbato, con presa pressione da 1/4.

Adapter for gas meters brackets, male/female, from 110 mm to 250 mm., with 1/4" pressure gauge port.



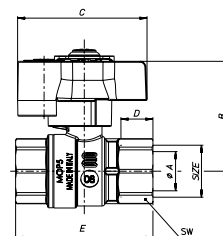
Art. S.3269 OMEGA



SIZE	3/4"	1"							
A mm	20	25							
B mm	56	60							
C mm	66	66							
D mm	16,3	19,1							
E mm	73,5	86,5							
SW mm	31	38							

Valvola a sfera femmina/femmina a passaggio totale per gas combustibili con serratura di morosità, con farfalla, nichelata.

Full bore ball valve for fuel gas, female/female, with key-locking device, with T-handle, nickel-plated.



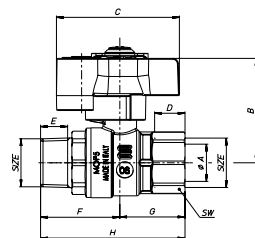
Art. S.3278 OMEGA



SIZE	3/4"	1"							
A mm	20	25							
B mm	56	60							
C mm	66	66							
D mm	16,3	19,1							
E mm	14,5	16,8							
F mm	42,5	47,5							
G mm	35	41,5							
H mm	77,5	89							
SW mm	31	38							

Valvola a sfera maschio/femmina a passaggio totale per gas combustibili con serratura di morosità, con farfalla, nichelata.

Full bore ball valve for fuel gas, male/female, with key-locking device, with T-handle, nickel-plated.



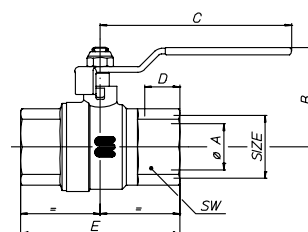
Art. S.0271 OMEGA



SIZE	1/4"	3/8"	1/2"	3/4"	1"	1 1/4"	1 1/2"	2"	2 1/2"	3"	4"
øA pass./bore	10	10	15	20	25	32	40	50	65	80	100
B mm	37	37	41,7	49,8	53,8	63,2	72	83,7	99,5	113,2	139
C mm	90	90	90	105	105	120	140	170	170	250	250
D mm	11	11,4	15	16,3	19,1	21,4	21,4	25,7	30,2	33,3	39,3
E mm	47,5	49,5	65	73,5	86,5	101,5	115,5	132,5	158	182,5	219
SW mm	17	21	26	32	39	48	55	68	83	97	124

Valvola a sfera femmina/femmina a passaggio totale per gas combustibili con leva in acciaio gialla, nichelata.

Full bore ball valve for fuel gas with steel lever, female/female, nickel-plated.



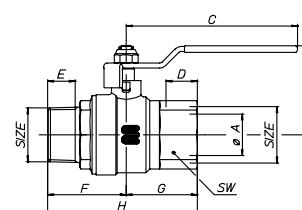
Art. S.0272 OMEGA



SIZE	1/4"	3/8"	1/2"	3/4"	1"	1 1/4"	1 1/2"	2"			
øA pass./bore	10	10	15	20	25	32	40	50			
B mm	37	37	41,7	49,8	53,8	63,2	72	83,7			
C mm	90	90	90	105	105	120	140	170			
D mm	11	11,4	15	16,3	19,1	21,4	21,4	25,7			
E mm	9,7	10,1	13,2	14,5	16,8	19,1	19,1	23,4			
F mm	30,75	31,25	38	42,25	47,75	54,25	60,25	72,75			
G mm	23,75	24,75	32,5	36,75	43,25	50,75	55,75	66,25			
H mm	54,5	56	70,5	79	91	105	116	139			
SW mm	17	21	26	32	39	48	55	68			

Valvola a sfera maschio/femmina a passaggio totale per gas combustibili con leva in acciaio gialla, nichelata.

Full bore ball valve for fuel gas with steel lever, male/female, nickel-plated.



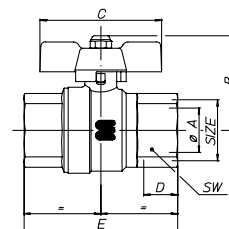
Art. S.0277 OMEGA



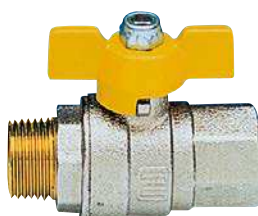
SIZE	1/4"	3/8"	1/2"	3/4"	1"				
øA pass./bore	10	10	15	20	25				
B mm	35	35	40,5	49,5	54				
C mm	52	52	52	65	65				
D mm	11	11,4	15	16,3	19,1				
E mm	47,5	49,5	65	73,5	86,5				
SW mm	17	21	26	32	39				

Valvola a sfera femmina/femmina a passaggio totale per gas combustibili con farfalla gialla, nichelata.

Full bore ball valve for fuel gas with T-handle, female/female, nickel-plated.



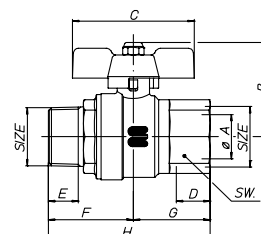
Art. S.0278 OMEGA



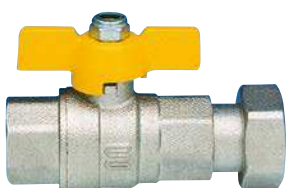
SIZE	1/4"	3/8"	1/2"	3/4"	1"				
øA pass./bore	10	10	15	20	25				
B mm	35	35	40,5	49,5	54				
C mm	52	52	52	65	65				
D mm	11	11,4	15	16,3	19,1				
E mm	9,7	10,1	13,2	14,5	16,8				
F mm	30,75	31,25	38	42,25	47,75				
G mm	23,75	24,75	32,5	36,75	43,25				
H mm	54,5	56	70,5	79	91				
SW mm	17	21	26	32	39				

Valvola a sfera maschio/femmina a passaggio totale per gas combustibili con farfalla gialla, nichelata.

Full bore ball valve for fuel gas with T-handle, male/female, nickel-plated.



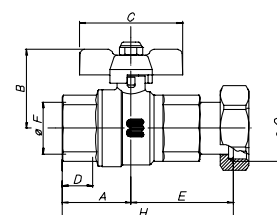
Art. S.0284 OMEGA



SIZE	1/2"x3/4"	3/4"x1"	3/4"x1 1/4"	1"x1 1/4"	1 1/4"x1 1/2"	1 1/2"x2"			
A mm	32,5	36,75	36,75	43,25	50,75	55,75			
B mm	41,7	49,8	49,8	53,8	63,2	72			
C mm	52	65	31	65	-	-			
D mm	15	16,3	16,3	19,1	21,4	21,4			
E mm	48	53,25	61,75	65,25	74,25	92,25			
øF	1/2"	3/4"	3/4"	1"	1 1/4"	1 1/2"			
øG	3/4"	1"	1 1/4"	1 1/4"	1 1/2"	2"			
H mm	65,5	90	98,5	108,5	125	148			

Valvola a sfera a passaggio totale per gas combustibili, femmina /girello, con farfalla o leva per contatori, nichelata.

Full bore ball valve for fuel gas with T-handle or steel lever, female/nut, nickel-plated.



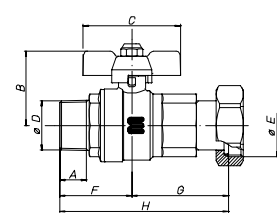
Art. S.0285 OMEGA



SIZE	1/2"x3/4"	3/4"x1"	3/4"x1 1/4"	1"x1 1/4"	1 1/4"x1 1/2"	1 1/2"x2"			
A mm	13,2	14,5	14,5	16,8	19,1	19,1			
B mm	41,7	49,8	49,8	53,8	63,2	72			
C mm	52	65	65	65	-	-			
øD	1/2"	3/4"	3/4"	1"	1 1/4"	1 1/2"			
øE	3/4"	1"	1 1/4"	1 1/4"	1 1/2"	2"			
F mm	38	42,25	42,25	47,47	54,25	60,25			
G mm	48	53,25	61,75	65,25	74,25	92,25			
H mm	86	95,5	104	113	128,5	152,5			

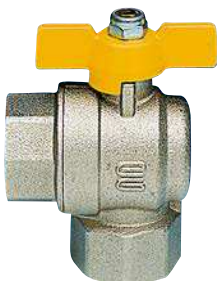
Valvola a sfera a passaggio totale per gas combustibili, maschio/girello, con farfalla o leva per contatori, nichelata.

Full bore ball valve for fuel gas with T-handle or steel lever, male/nut, nickel-plated.



Art. S.0286 OMEGA

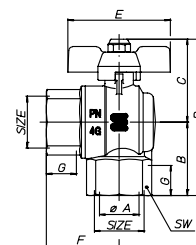
ERC



SIZE	1/2"x1/2"	3/4"x3/4"	1"x1"						
øA pass./bore	15	20	25						
B mm	33	39	46,5						
C mm	39,5	48,5	53						
D mm	72,5	87,5	99,5						
E mm	52	65	65						
F mm	31,5	35	41,5						
G mm	15	16,3	19,1						
SW mm	26	32	39						

Valvola a sfera per gas combustibili a passaggio totale femmina/femmina a squadra, con farfalla, nichelata.

Angled full bore valve for fuel gas with T-handle, female/female, nickel-plated.



Art. S.0287 OMEGA

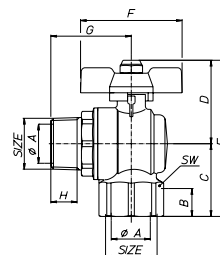
ERC



SIZE	1/2"x1/2"	3/4"x3/4"	1"x1"						
øA pass./bore	15	20	25						
B mm	15	16,3	18,1						
C mm	33	39	46,5						
D mm	39,5	48,5	53						
E mm	72,5	87,5	99,5						
F mm	52	65	65						
G mm	38,5	42,5	48						
H mm	13,3	14,5	16,8						
SW mm	26	32	39						

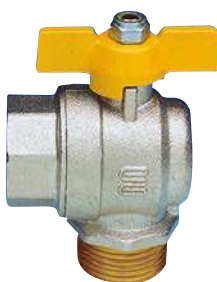
Valvola a sfera per gas combustibili femmina/maschio a squadra passaggio totale, con farfalla, nichelata.

Angled full bore ball valve for fuel gas with T-handle, female/male, nickel-plated.



Art. S.0288 OMEGA

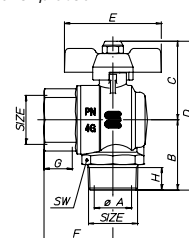
ERC



SIZE	1/2"x1/2"	3/4"x3/4"	1"x1"						
øA pass./bore	15	20	25						
B mm	33,5	39,5	47						
C mm	39,5	48,5	53						
D mm	73	88	100						
E mm	52	65	65						
F mm	31,5	35	41,5						
G mm	15	16,3	19,1						
H mm	11,5	12,9	14,7						
SW mm	26	32	39						

Valvola a sfera a passaggio totale per gas combustibili maschio/femmina a squadra, con farfalla, nichelata.

Angled full bore ball valve for fuel gas with T-handle, male/female, nickel-plated.



Art. S.0289 OMEGA

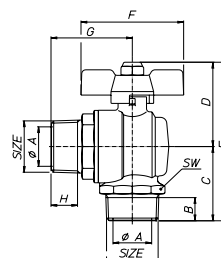
ERC



SIZE	1/2"x1/2"	3/4"x3/4"	1"x1"						
øA pass./bore	15	20	25						
B mm	11,5	12,9	14,7						
C mm	33,5	39,5	47						
D mm	39,5	48,5	53						
E mm	73	88	100						
F mm	52	65	65						
G mm	38,5	42,5	48						
H mm	13,2	14,5	16,8						
SW mm	26	32	39						

Valvola a sfera per gas combustibili maschio/maschio a squadra passaggio totale, con farfalla, nichelata.

Angled full bore ball valve for fuel gas with T-handle, male/male, nickel-plated.



Art. S.0290 OMEGA

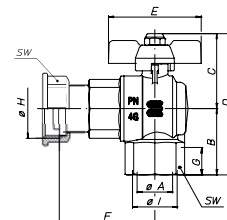
ERL



SIZE	3/4"x1"	3/4"x1 1/4"	1"x1 1/4"						
øA pass./bore	20	20	25						
B mm	39	39	46,5						
C mm	48,5	48,5	53						
D mm	87,5	87,5	99,5						
E mm	65	65	65						
F mm	51,5	61	64,5						
G mm	16,3	16,3	19,1						
øH mm	1"	1 1/4"	1 1/4"						
øI mm	3/4"	3/4"	1"						
SW mm	32	32	39						

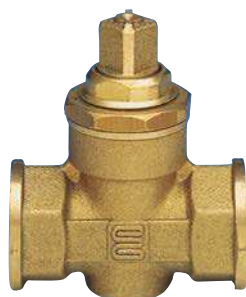
Valvola a sfera a passaggio totale per gas combustibili femmina, a squadra per contatore, con farfalla, nichelata.

Angled full bore ball valve for fuel gas with T-handle, female/nut, nickel-plated.



Art. G.0055 OMEGA

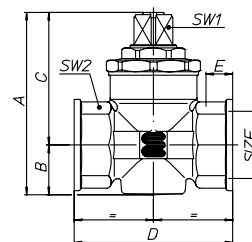
ERL



SIZE	1/2"	3/4"	1"	1 1/4"	1 1/2"	2"			
A mm	64,5	73	85,5	102,5	109,75	127,5			
B mm	15,5	19	23	31	33,5	39,5			
C mm	49	54	62,5	71,5	76,25	88			
D mm	57	64	75	92	102	122			
E mm	9,7	11,2	12,7	13,7	15,7	17,7			
SW1 mm	12	12,5	14,5	19	19	24			
SW2 mm	25	31	38	47,5	54	66			

Rubinetto a maschio conico femmina/femmina con quadro, sabbato.

Tapered plug for fuel gas and water with square head, female/female.



Art. S.1101 OMEGA HTB

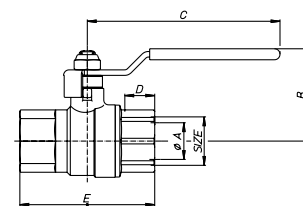
ERL



SIZE	1/2"	3/4"	1"	1 1/4"	1 1/2"	2"			
øA pass./bore	15	20	25	32	40	50			
B mm	42	50	54,5	63,2	72	83,7			
C mm	90	105	105	120	140	170			
D mm	15	16,3	19,1	21,4	21,4	25,7			
E mm	64,5	73,5	86,5	101,5	115,5	132,5			
SW mm	26	32	39	48	55	68			

Valvola a sfera per gas combustibili, femmina/femmina con leva in acciaio, nichelata. Resistente alle alte temperature.

Ball valve for fuel gas with steel lever, female/female, nickel-plated. Resistant to high temperature.



Art. S.1102 OMEGA HTB

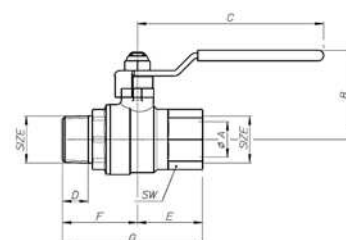
ERL



SIZE	1/2"	3/4"	1"	1 1/4"	1 1/2"	2"			
øA pass./bore	15	20	25	32	40	50			
B mm	42	50	54,5	63,2	72	83,7			
C mm	90	105	105	120	140	170			
D mm	13,2	14,5	16,8	21,4	21,4	25,7			
E mm	32,5	36,75	43,25	19,1	19,1	23,4			
F mm	38	42,25	47,75	54,25	60,25	72,75			
G mm	70,5	79	91	50,75	55,75	66,25			
SW mm	26	32	39	48	55	68			

Valvola a sfera per gas combustibili, maschio/femmina con leva in acciaio, nichelata. Resistente alle alte temperature.

Ball valve for fuel gas with steel lever, male/female, nickel-plated. Resistant to high temperature.



Art. S.1107 OMEGA HTB

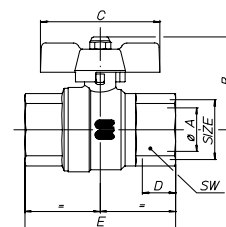
ERC



SIZE	1/2"	3/4"	1"							
øA pass./bore	15	20	25							
B mm	40,5	49,5	54							
C mm	52	65	65							
D mm	15	16,3	19,1							
E mm	65	73,5	86,5							
SW mm	26	32	39							

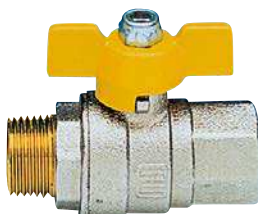
Valvola a sfera per gas combustibili, femmina/femmina con farfalla, nichelata. Resistente alle alte temperature.

Ball valve for fuel gas with T-handle, female/female, nickel-plated. Resistant to high temperature.



Art. S.1108 OMEGA HTB

ERC



SIZE	1/2"	3/4"	1"							
øA pass./bore	15	20	25							
B mm	40,5	49,5	54							
C mm	52	65	65							
D mm	15	16,3	19,1							
E mm	13,2	14,5	16,8							
F mm	38	42,25	47,75							
G mm	32,5	36,75	43,25							
H mm	70,5	79	91							
SW mm	26	32	39							

Valvola a sfera per gas combustibili, maschio/femmina con farfalla, nichelata. Resistente alle alte temperature.

Ball valve for fuel gas with T-handle, male/female, nickel-plated. Resistant to high temperature.

